

JET

JTS-315L

Table Saw

10001910M ~230V 50Hz

PARTS LIST

JPW (Tool) AG

Tämperlistrasse 5

CH-8117 Fällanden

Switzerland

Phone +41 44 806 47 48

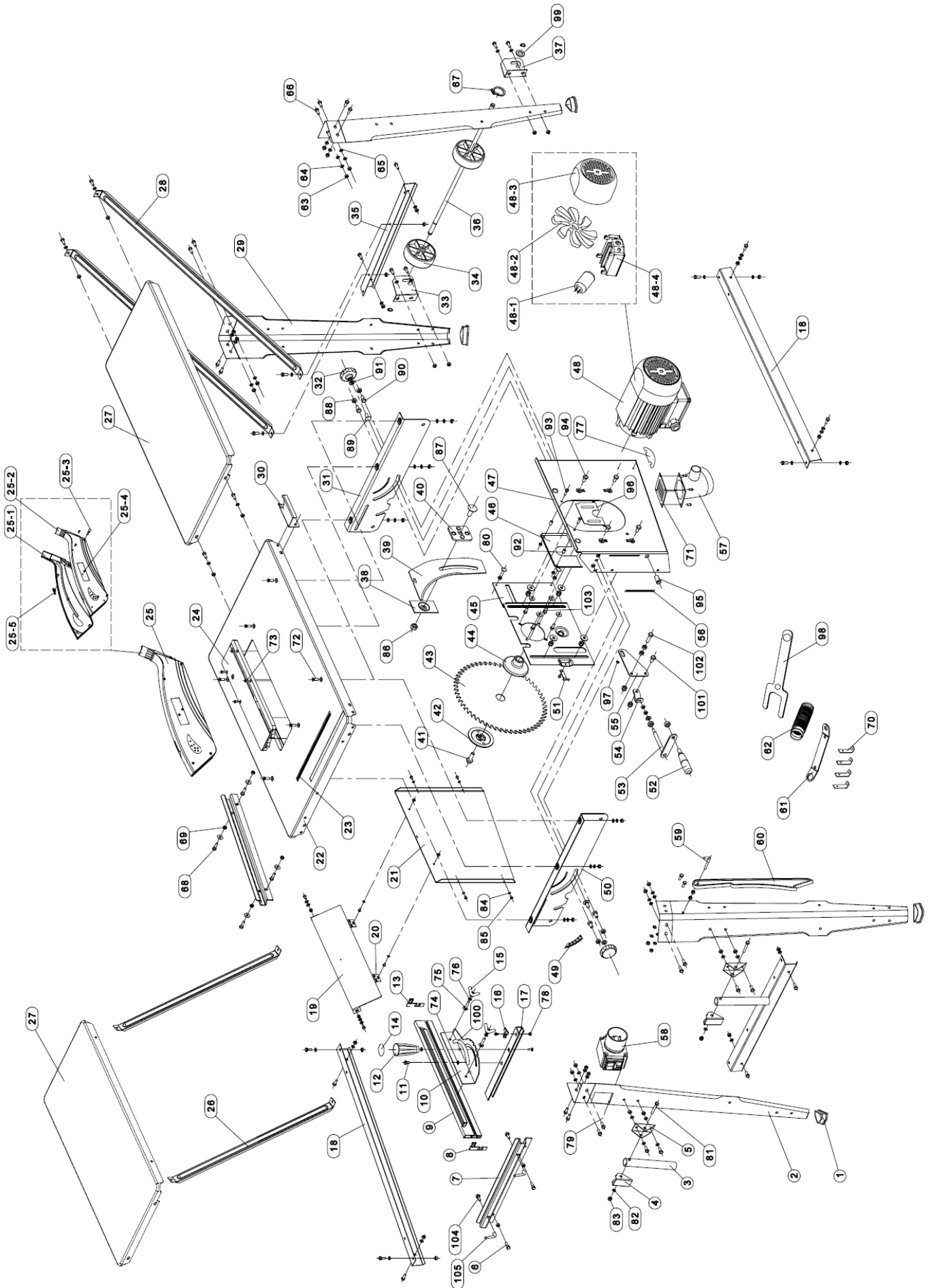
Fax +41 44 806 47 58

www.jettools.com



P- 10000910M 2014-03

Parts Breakdown for JTS-315L Table Saw



Parts List For JTS-315L Table Saw

Index No.	Part No.	Description	Size	Qty.
1	JTS315L-001	Rubber Foot		4
2	JTS315L-002	Leg		1
3	JTS315L-003	Pushing Handle		2
4	JTS315L-004	Pushing Handle Cover		2
5	JTS315L-005	Pushing Handle Seat		2
6	JTS315L-006	Fit Bolt		2
7	JTS315L-007	Rip Fence Carrier		2
8	JTS315L-008	Front Stem		1
9	JTS315L-009	Rip Fence		1
10	JTS315L-010	Angle gauge		1
11	JTS315L-011	Fit Bolt		1
12	JTS315L-012	Long Handle		1
13	JTS315L-013	Back Stem		1
14	JTS315L-014	Handle Cover		1
15	JTS315L-015	Nut		2
16	JTS315L-016	Angle Point		1
17	JTS315L-017	Bracket		1
18	JTS315L-018	Strut Long		2
19	JTS315L-019	Clip Case Protective Cap		1
20	JTS315L-020	Hinge		2
21	JTS315L-021	Clip Case		1
22	JTS315L-022	Working Table		1
23	JTS315L-023	Scale		1
24	JTS315L-024	Table Insert		1
25	JTS315L-025	Blade Guard		1
25-1	JTS315L-025-1	Blade Guard ,Left		1
25-2	JTS315L-025-2	Blade Guard, Right		1
25-3	JTS315L-025-3	Cup Head Square Neck Bolt	M6x35	1
25-4	JTS315L-025-4	Pan Head Tapping Screw	ST2.9 x13	5
25-5	JTS315L-025-5	Butterfly Bolt M6		1
26	JTS315L-026	Short Bracket		2
27	JTS315L-027	Extension Table		1
28	JTS315L-028	Long Bracket		2
29	JTS315L-029	Leg		3
30	JTS315L-030	Hose Support		1
31	JTS315L-031	Supporting Plate,Front		1
32	JTS315L-032	Locking Knob		2
33	JTS315L-033	Wheel Bracket,Left		1
34	JTS315L-034	Wheel		2
35	JTS315L-035	Strut Short		2
36	JTS315L-036	Wheel Shaft		1
37	JTS315L-037	Wheel Bracket,Right		1
38	JTS315L-038	Pressure Plate		1
39	JTS315L-039	Riving Knife		1
40	JTS315L-040	Riving Knife Sliding Seat		1
41	JTS315L-041	Blade Bolt		1
42	JTS315L-042	Saw Blade Plate		1
43	JTS315L-043	Blade		1
44	JTS315L-044	Saw Blade Flange		1
45	JTS315L-045	Motor Bracket		1
46	JTS315L-046	Holding Plate		1
47	JTS315L-047	Chips Box		1
48	JTS315L-048	Motor		1
48-1	JTS315L-048-1	Motor Capacitor		1
48-2	JTS315L-048-2	Motor Fan		1
48-3	JTS315L-048-3	Motor Cover		1
48-4	JTS315L-048-4	Motor Box		1
49	JTS315L-049	Angle Lable		1
50	JTS315L-050	Supporting Plate,Back		1
51	JTS315L-051	Pointer		1
52	JTS315L-052	Blade Height Setting Handle		1
53	JTS315L-053	Handle		1
54	JTS315L-054	Connecting Block		1
55	JTS315L-055	Guide Block		1

Parts List For JET JTS-315L Table Saw

Index No.	Part No.	Description	Size	Qty.
56	JTS315L-056	Height Scale		1
57	JST315L-057	Dust Extractor		1
58	JST315L-058	Switch & Plug		1
59	JST315L-059	Hook		1
60	JST315L-060	Push Stick		1
61	JST315L-061	Wrench		1
62	JST315L-062	Dust Extractor Pipe		1
63	JST315L-063	Hex Nut	M6	56
64	JST315L-064	Washer	6	50
65	JST315L-065	Spring Washer	6	38
66	JST315L-066	Hexagon Bolt	M6x16	46
67	JST315L-067	Circlips for shaft	20	6
68	JST315L-068	Hexagon Bolt	M6x30	2
69	JST315L-069	Hexagonal Nut self-lock	M6	2
70	JST315L-070	Feet		4
71	JST315L-071	Packing		1
72	JST315L-072	Hex Socket Countersunk Head cap screw	M6x20	6
73	JST315L-073	Pan Head Tapping Screw	M4x16	4
74	JST315L-074	Tensile spring		1
75	JST315L-075	Cup Head Square Neck Bolt	M6x20	3
76	JST315L-076	Large Washer	6	12
77	JST315L-077	Motor Plain Washer		1
78	JST315L-078	Hex. Locking Nut	M5	1
79	JST315L-079	Pan Head Tapping Screw	ST4.2x25	2
80	JST315L-080	Square Neck Bolt	M6 x25	2
81	JST315L-081	Hexagon Bolt	M8x45	2
82	JST315L-082	Plain Washer	8	6
83	JST315L-083	Hex. Locking Nut	M8	6
84	JST315L-084	Lock Washer External Teeth	4	6
85	JST315L-085	Pan Head Screw	M4x10	8
86	JST315L-086	Nut	M12	1
87	JST315L-087	Cup Head Square Neck Bolt	M12x35	1
88	JST315L-088	Nut	M8	6
89	JST315L-089	Square Neck Bolt	M8 x20	2
90	JST315L-090	Bolt	M8x12	4
91	JST315L-091	Washer	8	2
92	JST315L-092	Holding Plate Tube		2
93	JST315L-093	Hex Bolt	M5x20	2
94	JST315L-094	Hex Bolt	M8x12	4
95	JST315L-095	Hex.River Nut	M10	1
96	JST315L-096	Plate		1
97	JST315L-097	Circlips for Shaft	10	1
98	JST315L-098	Wrench		1
99	JST315L-099	Washer	20	1
100	JST315L-100	Angle Scale		1
101	JST315L-101	Hex Bolt	M8x16	1
102	JST315L-102	Hex Bolt	M8x30	2
103	JST315L-103	Hex Bolt	M6x20	4
104	JST315L-104	Cup Head Square Neck Bolt	M6x25	2
105	JST315L-105	Lock Handle		1

Wiring Diagram for JTS-315L Table Saw

10001910M..... ~ 230V, 50Hz

